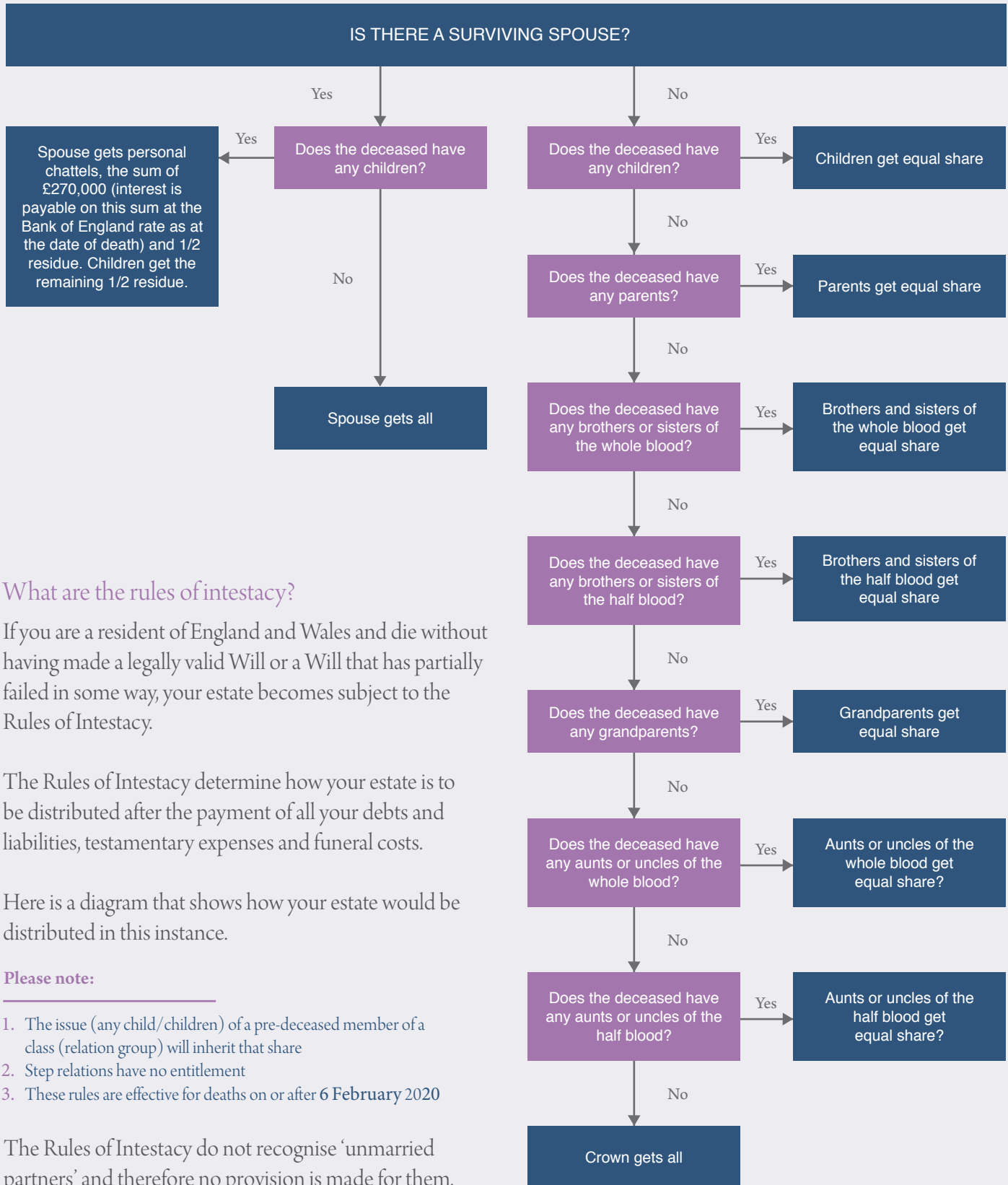


Intestacy Flow Chart

for deaths after 1st October 2014



THE WILL
COMPANY



What are the rules of intestacy?

If you are a resident of England and Wales and die without having made a legally valid Will or a Will that has partially failed in some way, your estate becomes subject to the Rules of Intestacy.

The Rules of Intestacy determine how your estate is to be distributed after the payment of all your debts and liabilities, testamentary expenses and funeral costs.

Here is a diagram that shows how your estate would be distributed in this instance.

Please note:

1. The issue (any child/children) of a pre-deceased member of a class (relation group) will inherit that share
2. Step relations have no entitlement
3. These rules are effective for deaths on or after 6 February 2020

The Rules of Intestacy do not recognise 'unmarried partners' and therefore no provision is made for them.

